

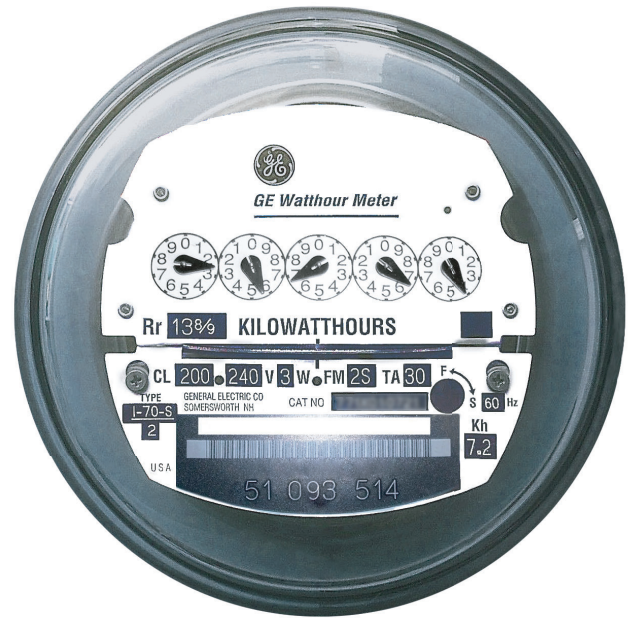
General Electric I-70


Single-phase analog meter

The familiar analog electric meter has served utility customers reliably and accurately for generations.

These non-communicating meters have mostly been replaced since 2012 with **smart meters** that allow for two-way communication between a customer's location and their electric utility.

Customers have a choice when selecting a meter for their home. The chart below explains some of the differences between smart meters and analog meters.



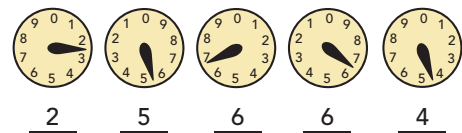
Comparing SMUD meters	Smart meter (digital)	Analog meter (non-communicating)
View your daily electricity use	Yes	No
Outage detection	Yes	No
Remotely connect your service	Yes	No
Future benefits like energy alerts and programs using a home area network	Yes	No
Set-up fee*	FREE	 Fees may change to reflect changes in meter, billing and other related costs.
Monthly charge*	FREE	

Reading an analog electric meter

The numbers in each dial faces are opposite from the one before it.

Starting with the dial on the right, record each number to get the current kilowatt hour reading.

Subtract from the previous month's reading to get your current month's usage.



Your kilowatt reading is 25664

* To view the fees and monthly charge for the analog non-communicating meter, visit smud.org/en/Rate-Information/Smart-meter-usage/Opt-Out-of-a-Smart-Meter or scan the QR code above..

Non-communicating - Does not transmit meter data between the customer and the utility.